



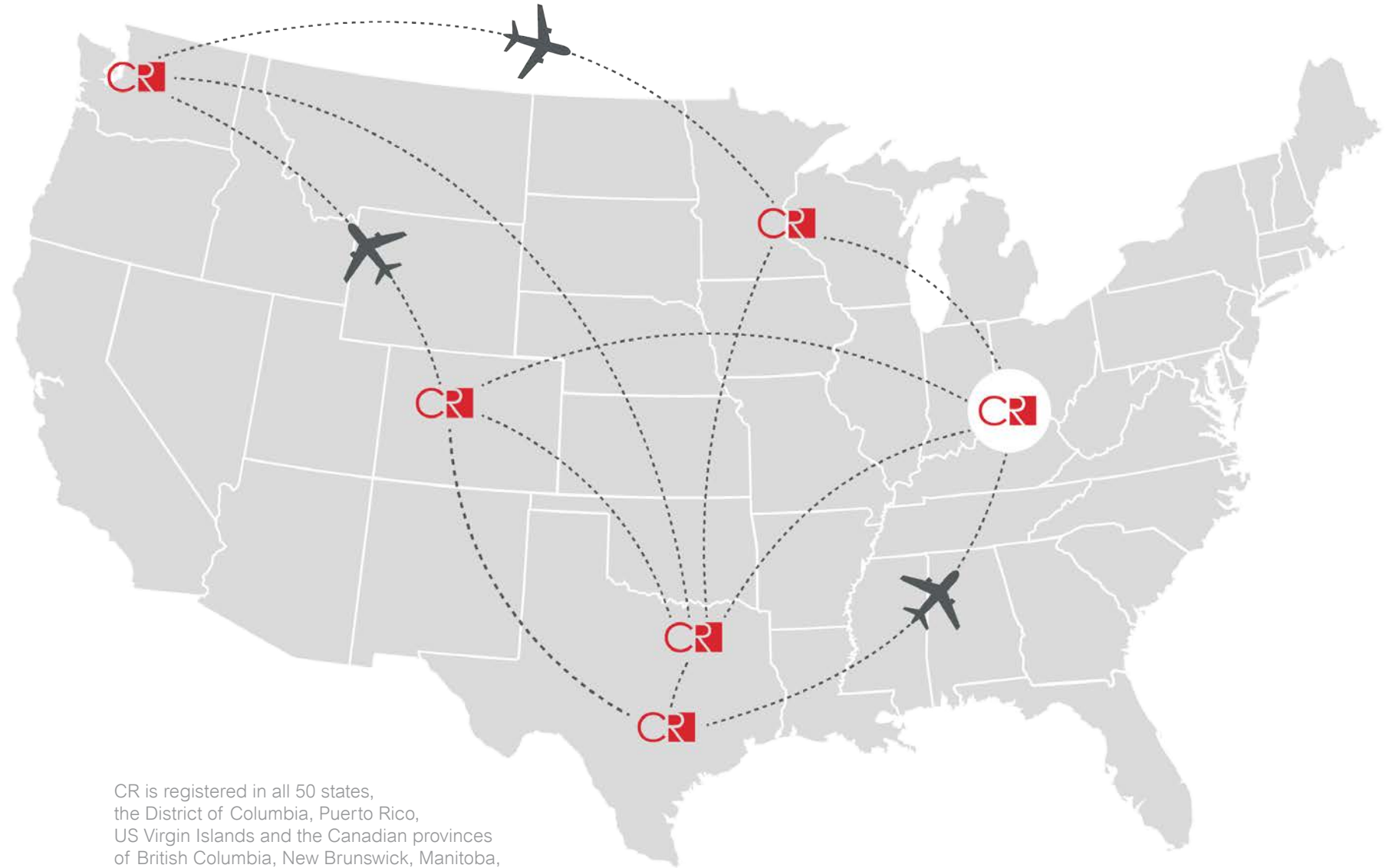
Introduction

About CR

At CR, architecture is not just an art, but a discipline. Our work, our people and our processes revolve entirely around the way space and structure are realized. We don't just design for what could be, we design for how its going to come together in the real world. We transform spaces into extraordinary places.

Locations

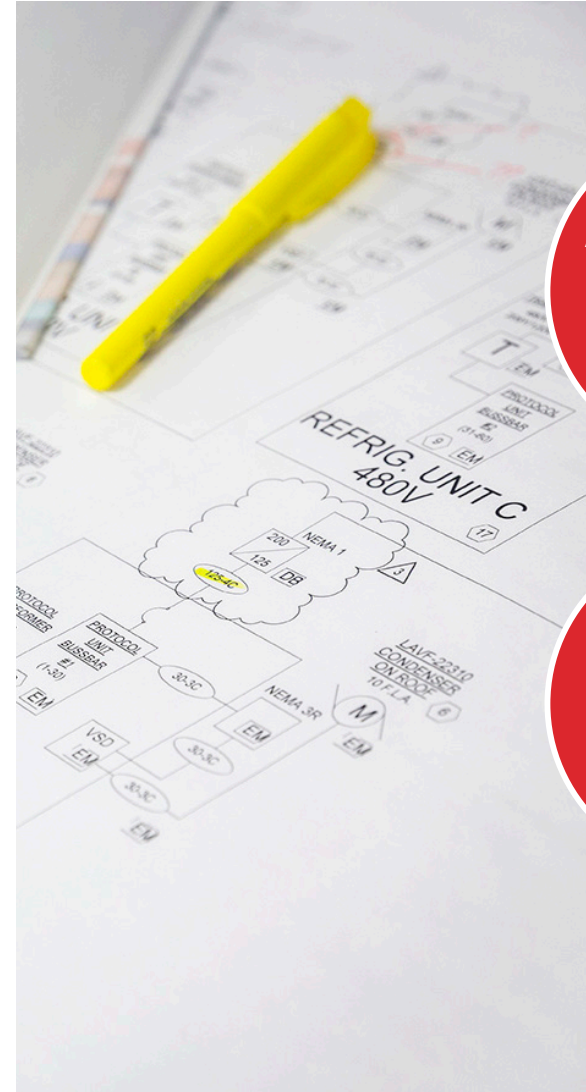
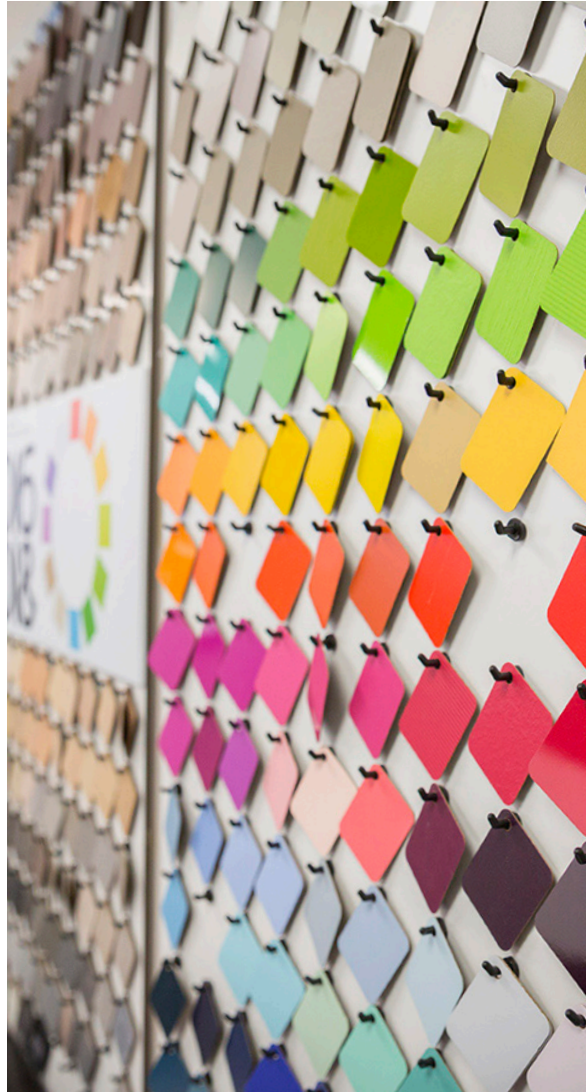
CINCINNATI
AUSTIN
DALLAS
DENVER
MINNEAPOLIS
SEATTLE



CR is registered in all 50 states,
the District of Columbia, Puerto Rico,
US Virgin Islands and the Canadian provinces
of British Columbia, New Brunswick, Manitoba,
Alberta, Ontario and Newfoundland and Labrador.

Our Services

We solve complex problems, design intuitive spaces and engineer innovative solutions. Every project is a chance to bring a space to life and we're hardwired to explore its full potential. We integrate the experience of our team and involve experts at every level to bring our clients' visions to life.

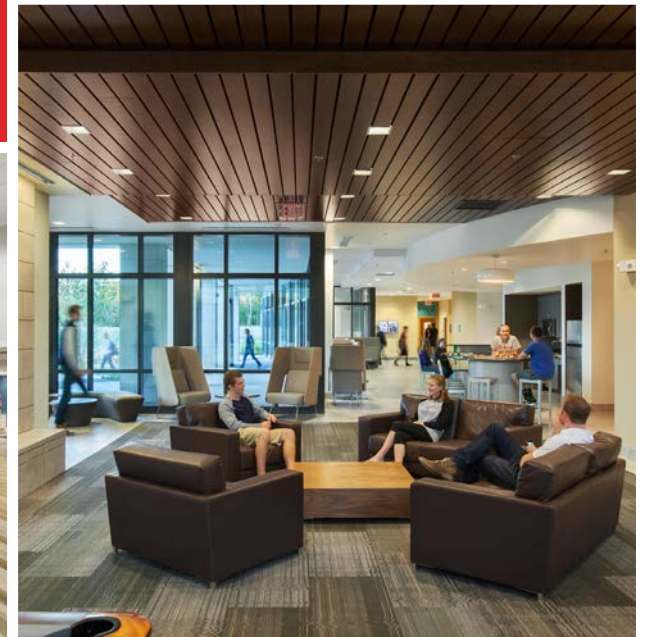


Our Markets

When you work with CR, you work with experts in your industry. From dedicated market leaders to creative client-focused teams, we work together to bring creativity and technical accuracy to every project.



GOVERNMENT
HOSPITALITY
RETAIL
EDUCATION
COMMERCIAL
HOUSING



Training by Design | Community Thumbprint



Since 1998, CR has partnered with fire departments across the country to economically incorporate physical and tactical training needs through innovative designs. Our Training by Design approach focuses on identifying the specific needs of your community and uses the fundamental training requirements of the department to develop the foundation of our designs. This highlights the significant difference between imitation and innovation - by partnering with you to identify the challenges of your environment, we will be positioned to tailor the design of your station to accommodate your current and future needs. The goal shouldn't be to simply provide access to training. It's providing the opportunity to engage in continuous, precise training that best prepares your department to serve your community.

For years, a major challenge for fire departments all over the nation has been limited access to training. Adequate training should support a department's overall mission by significantly affecting fire department personnel preparedness and readying them for the mental and physical rigors of the profession. What can we do to help make firefighters safer and more effective in the communities they serve? How can we implement training features into station design to increase training opportunities? How can we help departments mitigate the costs incurred when personnel train off site? What available options can we explore for alternate and creative funding sources? In short, how can we help fire departments do more with less?

The program consists of three core components:

Community Thumbprint – What does the community need from its Public Safety Service?

Preparedness – How can we create/design the training opportunities that help the department fulfill its mission ?

Budget – How can we afford the training opportunities?

Community Thumbprint - A community's unique public safety needs are what we call their thumbprint. An appreciation of the thumbprint is the first step in having a complete understanding of a department's mission. The ability to discern what specific training opportunities support the department's mission is the foundation of proper station design. Implementing training props into a design in a generic fashion just for the sake of having them leads to under-utilization of those props and a misuse of one of the most valuable commodities for a department, *space*.

Preparedness - The ultimate goal of any public safety design is for the facility to positively affect the proficiency of the crew. Mental and physical preparedness is inherently supported by our Training by Design concept. Being able to provide training that is as realistic as possible is essential. In a real-world situation, crew preparedness will be improved because of this enhanced exposure to training right where they work and live.

With these challenges comes an increase in the stress firefighters have to endure. Departments must acknowledge that PTSD and depression are increasing and designing facilities that can help address exposure to mental and physical stress is an important part of the process. A well-trained crew member will be confident in their abilities and have reduced stress.

Employing the latest advancements in mixed reality technology can boost decision making processes and situational assessments and allow crew members to master individual skills, by extension, improving team dynamics. Training for collaboration between stations or with local hospitals can help streamline emergency response times. Keeping firefighters free from smoke and other health-related issues involved in training through the use of digital technology, LED and sensor simulation installations are the new norm. Drone technology can help a department coordinate in the field and assist in collaboration with other entities. As public safety design professionals, we must master these technological advances and ensure that an increase in training does not increase a firefighter's exposure to health risks.

Budget - How can a department afford the implementation of these features into their fire station design? A study from the NFPA illustrates that the cost of basic hands-on training equipment (ropes, confined space, ladder, high line, etc.) is approximately \$5,000 for every 10 members of a crew. If a department engages in off-site training three times per year, the annual training could be \$15,000 or more for every 10 firefighters. Introducing unnecessary props leads to financial pitfalls and underutilization, placing even more emphasis on the need for careful consideration of training features that support a department's mission. As budgetary issues are more and more prevalent, how can departments do more with less?

Our Clients

Since entering the market 30 years ago, CR as completed over 200 government projects in 29 states and Puerto Rico, with the majority focused on public safety facilities. Below is a list of select projects:

ARKANSAS

Arkadelphia
Armed Forces Reserve Center

COLORADO

Alamosa City
Zapata Fire Substation Needs Assessment
Eagle River
Fire Department Feasibility Analysis
Frederick-Firestone
Fire Station No. 4
Louisville
Fire Feasibility Analysis & Concept Design
Montrose
Fire Station No. 2
Fire Station No. 3
Log Hill Mesa Fire Headquarters and Public Safety Building
New Castle
Burning Mountains Fire Protection District Headquarters

FLORIDA

Broward County
Four Fire Stations

GEORGIA

Suwanee
Police Substation & Training Center

HAWAII

Kaunakakai, Molokai
Maui County Fire Department Fire Station

INDIANA

Greendale
Fire Headquarters
Lawrenceburg
Arch Street Park
Plainfield
Fire Station No. 3
Fire Station No. 121

Fire Station No. 122
Fire Station No. 123
Fire Headquarters

IOWA

Des Moines
Fire Logistics & Training Center

KENTUCKY

Alexandria
Campbell County Fire District No. 4
Fire Headquarters
Boyle County
Fire Station & Training Center
Cold Spring
Central Campbell County Fire District Station Feasibility Study & Renovation
Edgewood
Municipal Complex
Fort Campbell
U.S. Army Corps of Engineers Special Operations Forces Company Headquarters & Training Center
Fort Mitchell
Fire/Police/Administration Needs Assessment/Feasibility Study
Goshen
North Oldham Fire Department Headquarters
Hebron
Cincinnati/Northern Kentucky International Airport Aircraft Rescue Firefighting Facility
Independence
Police/City Hall Facility
Lexington
Bluegrass Intl Airport ARFF Facility
MAINE
New Gloucester
Fire-Rescue Station Concept Study

MARYLAND

Salisbury
Fire Station Feasibility Studies (2)
Fire Headquarters
Fire Station No. 2 Renovation/Addition
Upperco
Arcadia Volunteer Fire Department Feasibility Study/Master Plan

MASSACHUSETTS

Brockton
Public Safety Complex Feasibility Study
Danvers
Police Station and Dispatch Center Expansion
Dedham
Police Station Feasibility Study
Groton
New Center Fire Station
Medfield
Public Safety Complex
Scituate
Public Safety Complex Feasibility Study
Westwood
Fire Station No. 2
Police Headquarters

MICHIGAN

Muskegon
Fire Headquarters
Oshtemo
Oshtemo Public Safety Facility
Spring Lake Twp
Fire Station Feasibility Study
Ypsilanti
Eastern Michigan University Public Safety Department Study (Police, Health, Safety, Parking)
Public Safety Building Conversion/Addition

MISSISSIPPI

Ridgeland
Fire Station No. 4

MISSOURI

Joplin
Fire Station No. 6
Fire Station No. 2

MONTANA

Eureka
Town Hall
Kalispell
Fire Station No. 62
City Hall
Recreation Needs Assessment/Feasibility Study
Victor
Fire Headquarters
Whitefish
Emergency Services Building
City Hall Feasibility Study

NEW JERSEY

Jackson Township
Fire Headquarters

NEW HAMPSHIRE

Plaistow
Public Safety Building Needs Assessment

OHIO

Amberley Village
Fire/Police/Administration Facility
Anderson Township
Fire Headquarters Addition
Fire Station Renovation
Sheriff Station Addition
Municipal Complex
Blue Ash
Fire Headquarters/EOC Service/Maintenance Facility

Public Works Needs Assessment/Feasibility Study

Bolivar
Fire Department Feasibility Study

California
Golf Course Maintenance Facility

Centerville
Public Works Facility
Public Works Feasibility Study

Cincinnati
Cincinnati Police Welcome Center
Fire Station No. 9
Fire Department Master Plan
911 Communication Center
Regional Emergency Operations Center
City Hall Fourth Floor Renovations
Convention Center Renovation/Expansion
Winton Hills Community Center Additions/Remodel

Term Contract Projects Include:
Price Hill Recreation Center Facility Assessment
Ice Arena Modifications Concept Design
Sawyer Point, Bicentennial Commons and Yeatman's Cove Facilities Assessments
Assessment of 18 Golf Buildings
Serpentine Wall Recessed Light Renovations
Lytle Fountain Safety Improvements
Public Landing Utility Access
Trench Replacement
Boathouse Locker Room Remodel
P&G Pavilion Canopy Replacement
Schmidt Boat Ramp Replacement & Facility Improvements
Reeves Golf Course Improvements
New California Wood Golf Course Maintenance Building
Highway Maintenance Garage
Colerain Township
Pleasant Run Fire Station No. 109

Fire Station No. 103 Renovation
Public Works Needs Assessment/
Feasibility Study
Public Works Facility

Columbia Township
Public Works Facility

Columbus
Fire Training Center

Corryville
Recreation Center

Cuyahoga Falls
Fire Station No. 5 & Dispatch Center

Dayton
Police Shooting Range Renovation

Deerfield Township
Fire Station No. 58
Fire Station No. 56 Renovation/Addition
Fire Station Feasibility Study

Deer Park
Municipal Needs Assessment/
Feasibility Study
Administration/Police Facility

Delhi Township
Police Department Addition

Evanston
Recreation Center Addition/Renovation

Evendale
Fire Station Renovation/Addition
Police/Administration Facility

Fairfield
Fire Station No. 2
Fire Station No. 3 Renovation/Addition

Fairfield Township
Fire Headquarters
Municipal Building Renovation
Police Headquarters
Community Park
Master Plan

Galion
Fire/Police Needs Assessment/
Feasibility Study

Goshen Township
Police/Administration Facility

Hamilton County
Term Contract 2005-2009:

Community Mental Health Board
Environmental Service Division
Mental Retardation & Developmental
Disabilities Offices
Adult Probation Offices
General Health District Offices
Jail Feasibility Study
800 Broadway Juvenile Court
Courthouse Renovations
Juvenile Court Youth Center

Harlan Township
Fire Headquarters

Indian Hill
Police/Administration Facility Renovation/
Addition + Needs Assessment/Study

Ironton
Fire Headquarters

Lebanon
City Hall Renovations

Liberty Township
Fire Headquarters
Fire Station No. 2 Additions/Renovations
Public Works Facility

London
Public Safety Study

Mason
Mason-Deerfield Joint Fire District Needs
Analysis & Master Plan

Medina Township
Fire Department Needs Assessment

Miami Township
Administration Facility Municipal Needs
Assessment/Master Plan
Public Works Facility
Fire Station No. 51
Police Headquarters Addition

Monroe
Fire Headquarters
Fire Station No. 1
Police/Administration Facility

Morgan Township
Fire Station 141 Needs Assessment
& Renovation

Oakwood
Fire/Police/Administration Facility

Renovation/Addition
Public Safety Needs Assessment

Orange Township
Fire Headquarters

Oxford
Municipal Building & Police Station
Renovations

Parma
Fire Department Needs Assessment/
Feasibility Study
Fire Stations No. 1 & 2

Perrysburg
Fire Station No. 2

Piqua
Fire Headquarters Renovation
Police/City Hall Facility
Municipal Needs Assessment/ Master Plan

Sharonville
Police/Administration Needs Assessment
Tax Department Relocation

Springboro
Police/Administration Facility

Stonelick Township
Needs Assessment/Master Plan

Sylvania Township
Fire Needs Assessment/Feasibility Study
Fire Stations No. 2, 3, 4
Fire Station No. 1 Renovation

Terrace Park
Fire Station
Community Building Renovation Village
Master Plan
Government Needs Assessment/
Feasibility Study

Toledo
Fire Station No. 3
Fire Station No. 12

Troy
Fire Department Feasibility Study

Twinsburg
Station 1 Feasibility Study

Upper Arlington
Fire Station No. 72, Police
Indoor Firing Range, EOC

Washington Court House
Fire Station Feasibility Study

Washington Township
Fire Training & Administration Building
Police Headquarters Feasibility Study
Fire/Administration Needs Assessment/
Feasibility Study

Waynesville
Village Master Plan

West Chester Township
Fire Station No. 2 Needs Assessment Study
Police/Courts Needs Assessment

Whitewater Township
Fire Station Feasibility Study

Wright-Patterson Air Force Base
Consolidated Fire/Crash Rescue Station
Marine Corps Reserve Center

Wyoming
Shooting Range Renovation
Recreation Center Study

PENNSYLVANIA

Girard
Fire Station Needs Assessment/
Feasibility Study

Stroud Township
Fire Feasibility Study

RHODE ISLAND

Warwick
Fire Headquarters

TENNESSEE

Nashville
Fire Station No. 9

Pleasant View
Fire Station Needs Assessment

TEXAS

Galveston
U.S. Coast Guard Multi-Missions Building

UTAH

Price City
Needs Assessment & Options Analysis

VERMONT

Waterbury
Fire Station Site Analysis

Williston
Fire Headquarters
Police Headquarters

VIRGINIA

James City County
Fire Station No. 4

Pearisburg
Fire Needs Assessment/Feasibility Study

Roanoke
Fire Headquarters
Fire Department Feasibility Study
Fire Training Center Feasibility Study
Fire Station No. 10 Programming
Fire Station No. 3
Fire Station No. 5
Police Academy

WISCONSIN

Madison
Training Exercise Building
Fire Station No. 14

Milwaukee
Aircraft Rescue and Firefighting Facility Addition

WYOMING

Gillette
Campbell County Fire District Station
Feasibility Study
Fire Headquarters

PUERTO RICO

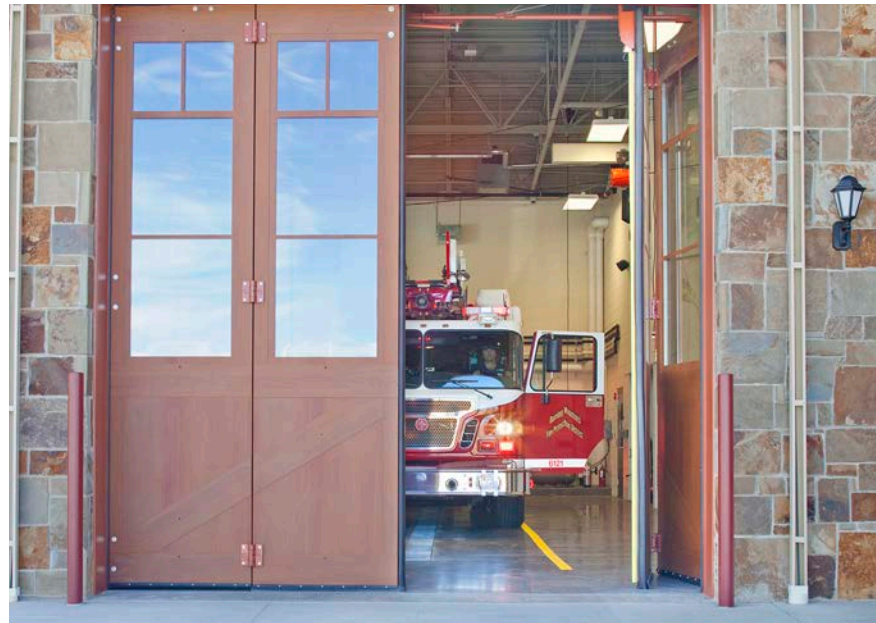
Fort Buchanan
Armed Forces Reserve Center

Mayaguez
Armed Forces Reserve Center

Our Work



Colorado River Fire Rescue Station No. 64
New Castle, CO



With a site selected and preliminary engineering complete, the Colorado River Fire Protection District needed an architectural partner who could design a station that would seamlessly fit into the local landscape, prioritize sustainable design solutions and accommodate future district expansion. Experienced with regional geographic and climate challenges and local architectural influences, the District found their ideal partner in CR.

Coming in under budget, the new Station No. 64 is a leader in sustainably designed fire stations and successfully serves outlying areas of the district with shorter response times. The station includes a training room that provides opportunities for both community meetings and firefighter education and supports on-site training for rappelling, ladder skills, confined space training and standpipe charging.

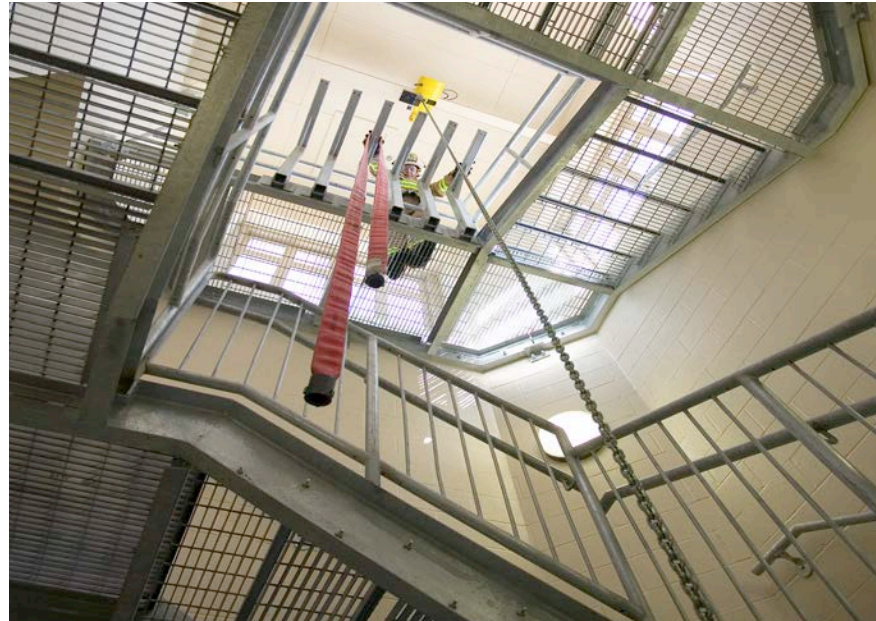


Des Moines Fire Training + Logistics Facility

Des Moines, IA

Designed to create a flexible, functional facility with a 50-year life-span and options for future expansion, the station has significantly improved the City of Des Moines' ability to provide quality public safety services to the community. Local issues of context, style and image were taken into consideration in the design process. Our team embraced a design philosophy that stresses aesthetic and functional appropriateness, while incorporating natural site responsiveness.

The facility is further enhanced with an on-site burn building, multi-story training tower, roof ventilation simulator, driver training course, auto extrication, simulated city buildings, drafting pit, obstacle course/confined space, CPAT course, technical rope rescue, rail yard and hazmat.

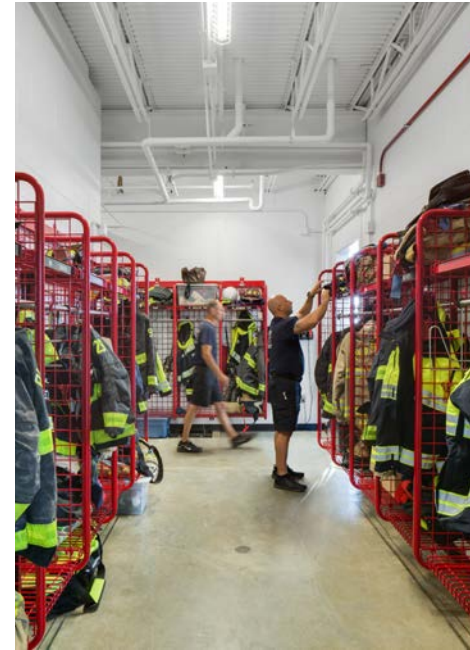


Greendale Fire Headquarters

Greendale, IN

The new volunteer fire headquarters, located on historic Ridge Avenue in Southeast Indiana, respects the architectural style of the surrounding neighborhood and contributes to the civic image of the City. The station features administrative offices, a meeting/training room, kitchen/dining/dayroom, dormitory for six, a physical fitness training room, a rear access drive and four pull-through apparatus bays.

The City required numerous on-site fire training features to support their proactive training program led by five licensed instructors. CR incorporated many features into the interior of the building to support basic firefighting techniques and skills.



**Plainfield Fire Territory
Station No. 122 + Headquarters**
Plainfield, IN

The third of four stations designed by our team in partnership with the Town of Plainfield, Station No. 122 was designed to feel residential, inspiring an “Industrial Loft” concept that blends the comforts of home with the station’s contemporary exterior by emphasizing clean lines and industrial materials. It shares a timeless design and contemporary exterior to complement local community aesthetics and unite the department’s identity.



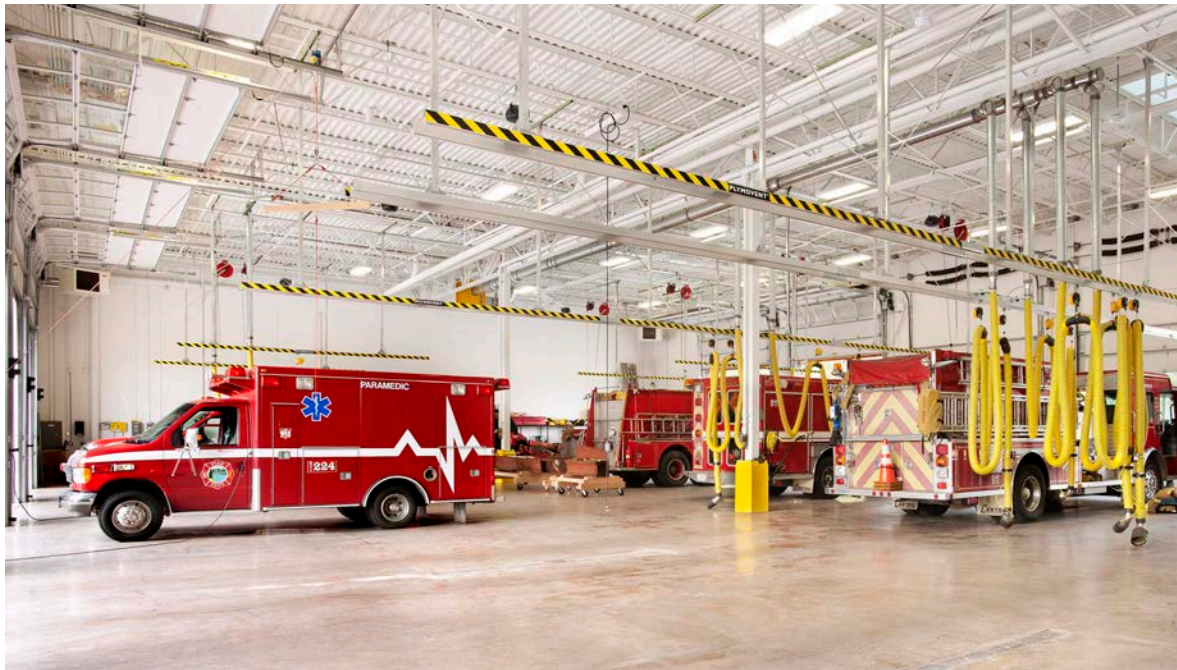
Whitefish Emergency Services Center

Whitefish, MT

In need of expanded space for their public safety departments, the City of Whitefish partnered with the CR team to study their current facilities, gain an understanding of their goals and future requirements and ultimately guide them to the best path forward.

CR developed a program and options analysis for the city's fire department, police department and court facilities, which subsequently resulted in designing a new Emergency Services Center. Designed to meet the needs of both departments and court facilities, we took into account the future growth of each and planned the space to accommodate expansion needs. Placed on a heavily-sloping reclaimed site, our team was able to creatively maximize the grade to provide entrances to both levels of the building.

In addition to on-site training opportunities for the public safety departments, the Emergency Services Center also includes 5 apparatus bays, a turn-out gear room, decontamination room, dormitory for 8, kitchen, day room, sallyport, evidence processing and storage, booking/processing room, holding cells, interview rooms, court room, judge chambers, kennel, armory, dispatch center, shared fitness and training rooms.



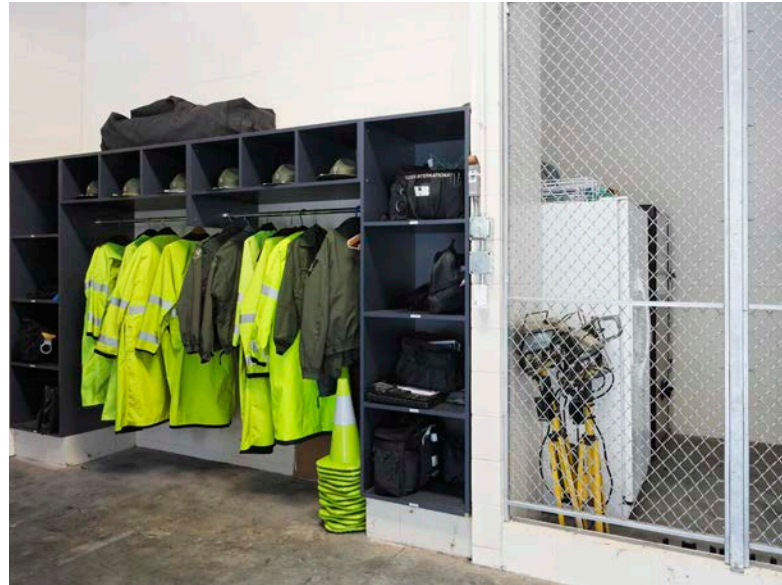
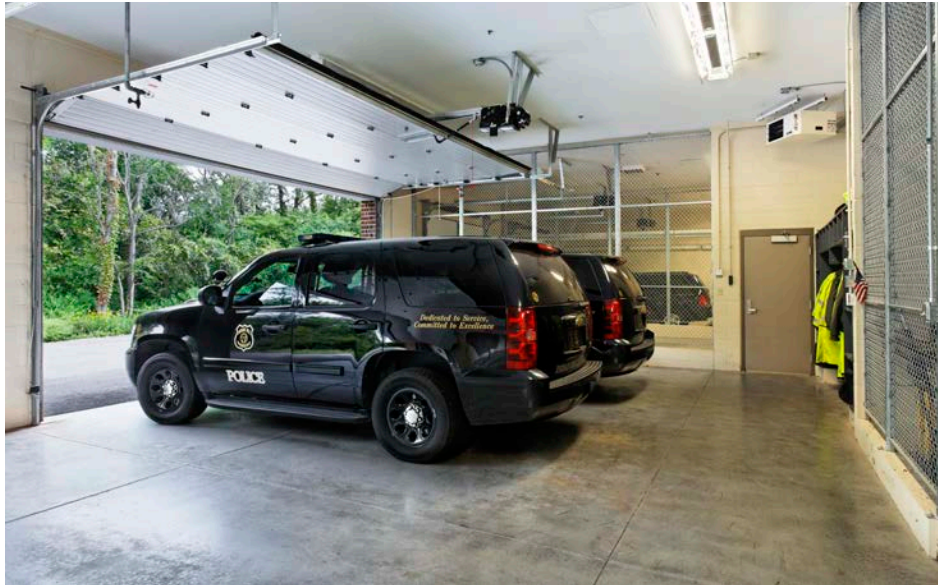


Miami Township Master Plan and Government Campus

Miamisburg, OH

In an effort to meet projected growth needs and maintain a centralized government campus on their existing site, our team evaluated the feasibility of a capital improvement master plan for the township's police, fire and administration departments.

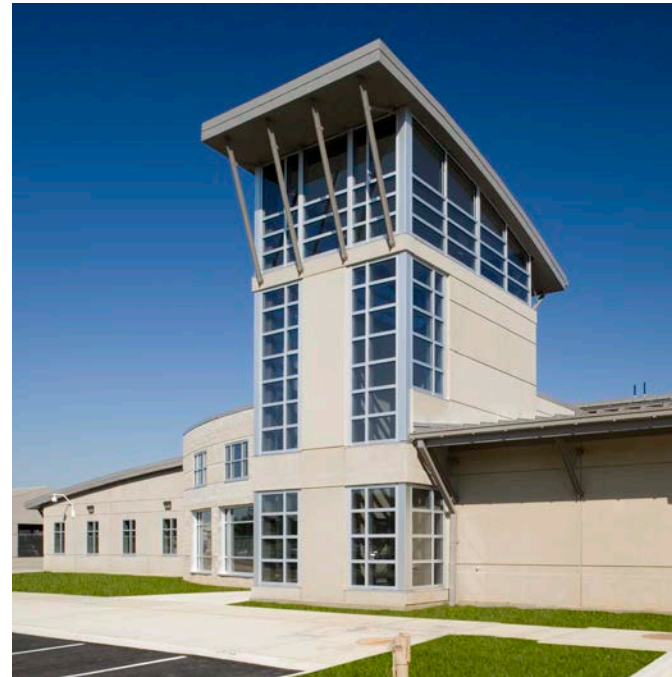
After proposing a new site for the fire station and public works facility, we simultaneously designed a public works facility, fire station, salt storage facility and Township fueling station on the same site. This comprehensive design allows for the Public Works Division to serve the entire Township from a single, consolidated facility. The use of similar materials and design features throughout the campus provide a holistic, cohesive experience.



Indian Hill Police + Administration Building Miamisburg, OH

Originally built in 1955, the design team was able to more than double the size of the City of Indian Hill's police and administration building through a phased renovation and addition. First demolishing 2,300 sq. ft. of the existing 12,500 sq. ft. facility, the subsequent phase included a 15,450 sq. ft. addition that fits seamlessly with the existing structure, keeping with the style of the 1950s neo-colonial design.

By utilizing a phased approach, the City was able to maintain operations throughout construction and achieve necessary accessibility, functionality and facility updates, while also preserving the existing site vegetation. A geothermal system was also added, enabling the facility to maintain the same energy costs despite the added space. Facility features include an Emergency Operating Center, armory, conference room, City Manager office, expanded lobby and improved accessibility.



**Wright Patterson Air Force Base
Consolidated Fire/Crash Rescue Station**
Dayton, OH

This station serves fire-crash for flight line and fire-rescue for land side of the base and is configured for maximum turning radius for responding crash vehicles. The facility accommodates three shifts of fire-rescue personnel and includes 21 individual dormitory rooms, four officer dormitories, fire department administration offices, a kitchen, day room, training room, emergency dispatch and quarter master supply. The building materials and systems respond to the program requirements, design objectives and budget considerations, and were key to meeting the tight construction schedule and fast-track approach.



Cincinnati/Northern Kentucky International Airport ARFF Hebron, KY

Designed to provide quicker EMS response times to existing and future terminal buildings, the ARFF allows the Airport Fire Department to meet the FAA-required three-minute response time to the mid-point of all airport runways. Built in two phases, it consists of an EMS/structural fire component and aircraft rescue entity.

The facility contains a dormitory, shower, kitchen/dining area, physical fitness space, dayroom and integral training components for three shifts of 12 crew members. Specialty areas and utilities consist of a foam distribution system, airport disaster recovery computer room, emergency operations center, communications center for an emergency crash phone system and remote audio-visual training equipment.



Roanoke Fire Headquarters

Roanoke, VA

CR has worked with the City of Roanoke to design its new fire headquarters, two new substations and the police academy. The fire headquarters is a three-story, 30,000-sf facility, which consolidated two antiquated fire stations.

The station houses department offices and administrative spaces, three apparatus bays, living quarters, dormitory, locker and restrooms, and a 50-person meeting room that is accessible to the public.

Fire Station No. 3 features a new two-bay station with an alternate third bay, six dorm rooms, offices, kitchen and a dining-dayroom that doubles as a community room. This project received LEED Gold certification.

Fire Station No. 5 is a three-bay station with a police substation, administrative offices, a training/community room, dorm rooms, kitchen and a dining-dayroom. The design incorporates sustainable elements and has a certification goal of LEED Silver.





www.cr-architects.com
800.469.4949